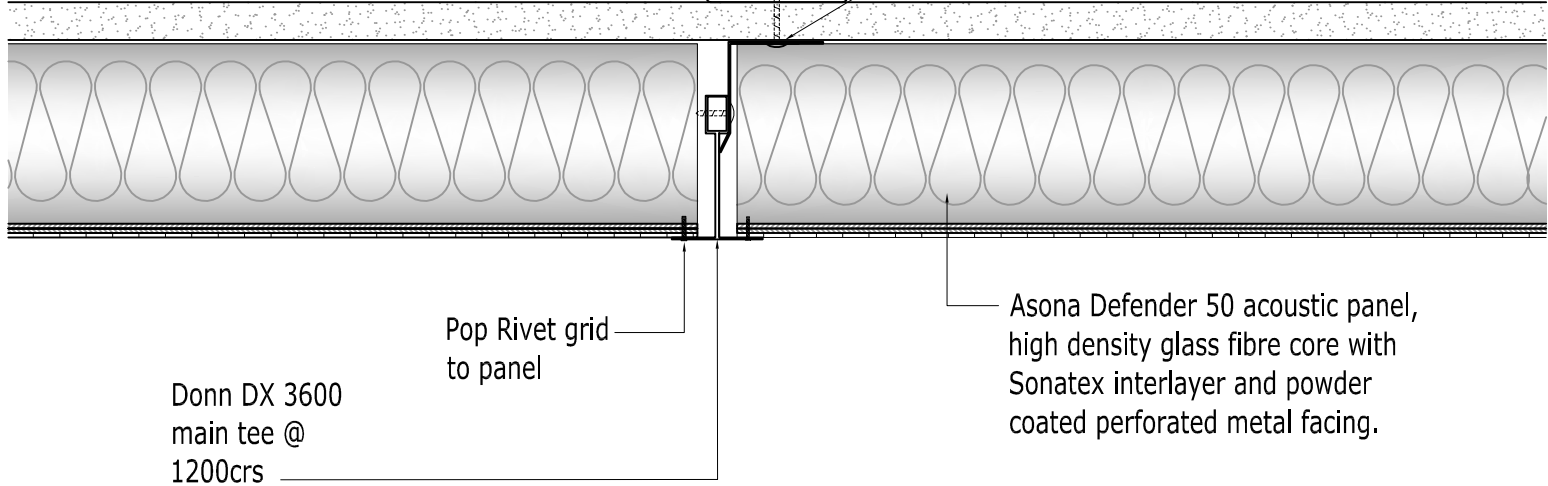


Framing with
plasterboard lining

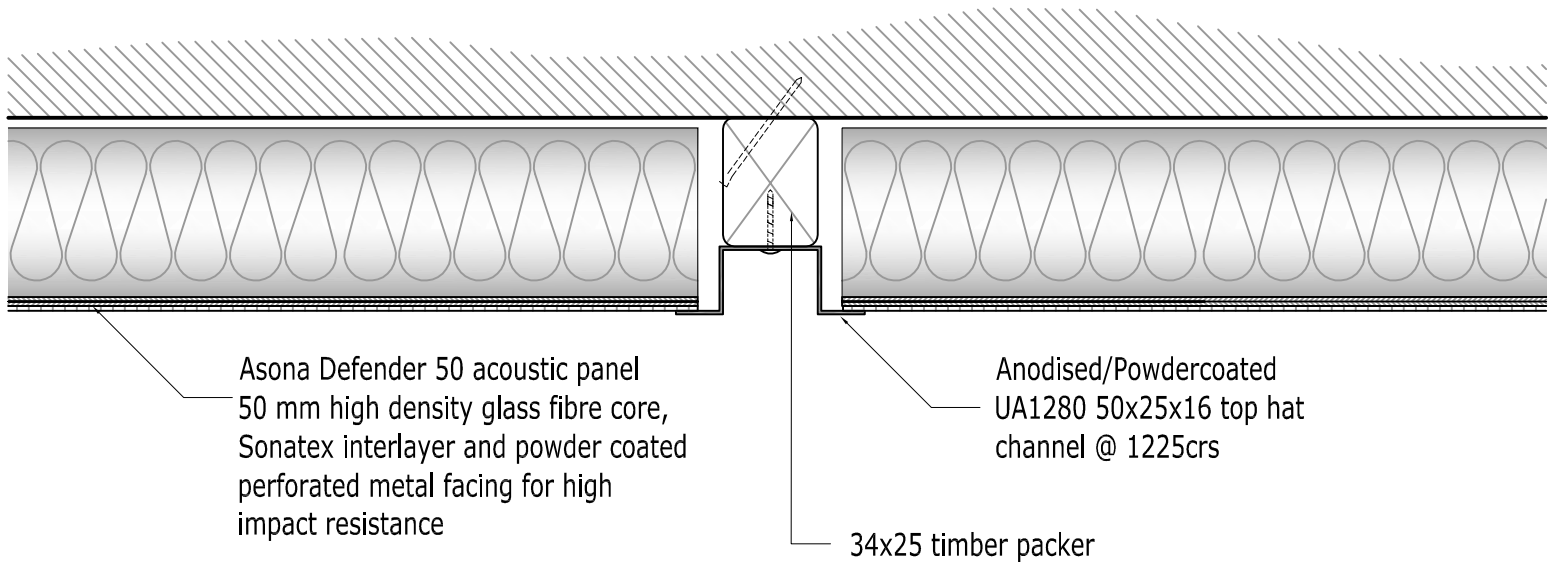
CL50 direct
fix bracket



Asona Defender 50 acoustic panel
50 mm high density glass fibre core,
Sonatex interlayer and powder coated
perforated metal facing for high
impact resistance

Anodised/Powdercoated
UA1280 50x25x16 top hat
channel @ 1225crs

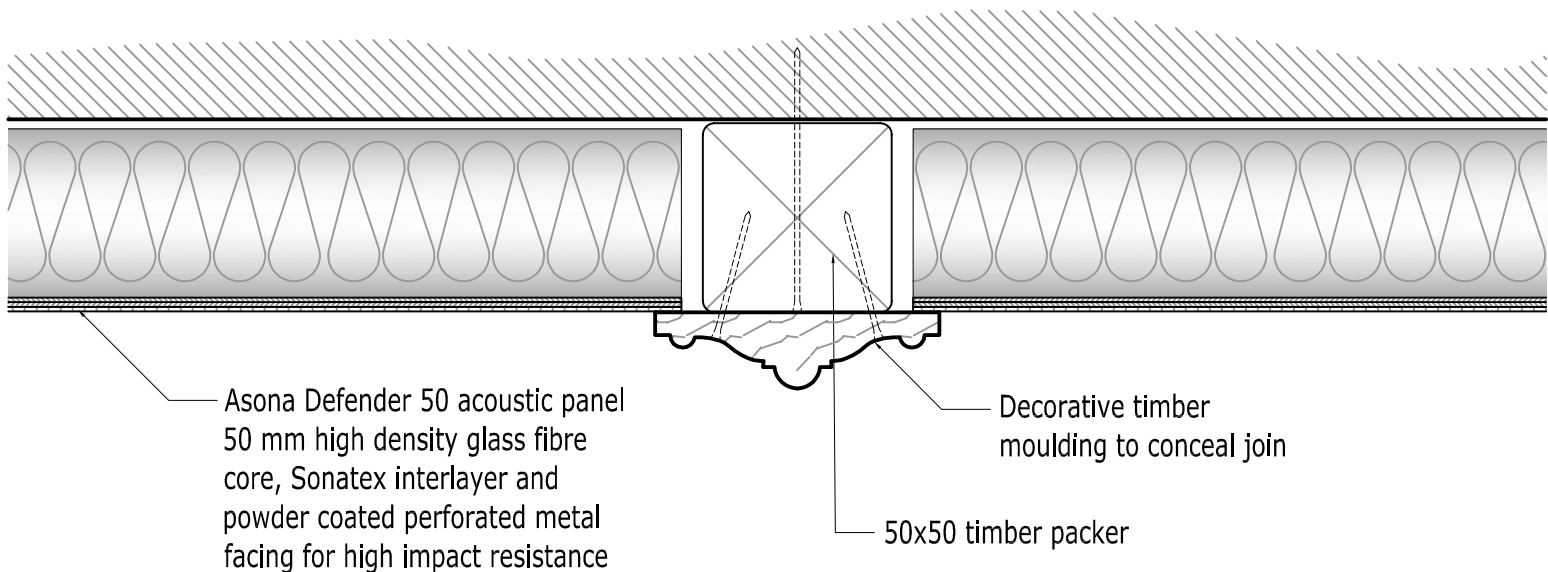
34x25 timber packer



Asona Defender 50 acoustic panel
50 mm high density glass fibre
core, Sonatex interlayer and
powder coated perforated metal
facing for high impact resistance

Decorative timber
moulding to conceal joint

50x50 timber packer



asona ltd.
acoustical building systems

ph: +64 9 525 6573
fx: +64 9 525 6579
e: info@asona.co.nz

COPYRIGHT ASONA LTD 2010

www.asona.co.nz

DETAIL

PRODUCT DESC.

APPLICATION

SCALE

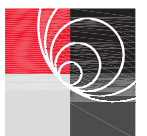
DRAWING REF.

Joint Detail Options

Asona Defender 50
Direct Fixed

1:2 @ A4

DE50/DF-Join Details



asona