

Triton Baffle Beam™ NRC 0.75

High Sound Absorbing Ceiling Beam

Technical Data sheet



asona

Description.

Triton Baffle Beam™ is a linear high sound absorbing non combustible glass fibre ceiling designed to control unwanted noise reverberation and to provide an attractive linear aesthetic. They can be direct fixed to lining or suspended and are available in range of widths, depths and lengths. For long runs they are joined end on end on site. The glass fibre core is wrapped with a proprietary Sonatex™ 2 ply glass mat acoustic laminate that is available in white, black, wood look print and a range of colours.

Application.

Baffle Beams™ are ideal for reception areas, corridors, open plan offices, showrooms, galleries, hospitality and large public spaces.

Composition.

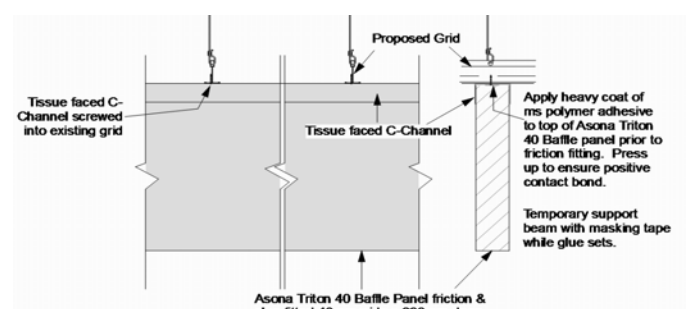
Made in NZ from proprietary Sonatex™ die cut and folded over 80kg/m³ bio-soluble glass fibre core.

Benefits.

- Long beam design provides a clean linear look.
- High sound absorption rating for control of reverberation.
- 40, 50 or 75 mm thick in a range of standard or custom depths up to 580 mm.
- Group 1S fire rating.
- Light weight and dimensionally stable.
- Available white, black, grey, wood-grain prints and RAL colours to order.
- GreenTag Certified / Level A



Item #	Size (nominal) *	Edge
BB40.01.24	40 x 100 x 2400	Square
BB40.015.24	40 x 150 x 2400	Square
BB40.02.24	40 x 200 x 2400	Square
BB40.03.24	40 x 300 x 2400	Square
BB40.04.24	40 x 400 x 2400	Square
BB40.05.24	40 x 500 x 2400	Square
BB40.06.24	40 x 600 x 2400	Square
BB50.01.24	50 x 100 x 2400	Square
BB50.015.24	50 x 150 x 2400	Square
BB50.02.24	50 x 200 x 2400	Square
BB50.03.24	50 x 300 x 2400	Square
BB50.04.24	50 x 400 x 2400	Square
BB50.05.24	50 x 500 x 2400	Square
BB50.06.24	50 x 600 x 2400	Square
BB75.01.24	75 X 100 X 2400	Square
BB75.02.24	75 x 200 x 2400	Square
BB75.03.24	75 x 300 x 2400	Square
BB75.04.24	75 x 400 X2400	Square
BB75.05.24	75 x 500 X2400	Square
BB75.06.24	75 x 600 X2400	Square



Technical Specifications

Sound absorption:

40 x 280 Beam @ 300mm centres, NRC 0.75, Test result: T1324-8. 40 x 280 Beam @ 600mm centres, NRC 0.55, Test result: T1324-9. PU coated decorative foil finish: 40 x 280 @300 mm centres, NRC 0.45, Text results: T1324-10

Colour:

Sonatex: (White AS180) (Mid Grey RAL7040) (Light Grey RAL7030) (Grey White RAL9002) (Wood Wool Print) (Plaster Print) (Wood Print over RAL1014 Oak) (Wood Print over RAL1013 Blond) (Wood Print over RAL8019 Walnut) (Zinc Yellow RAL1018) (Ivory RAL1014) (Graphite Black RAL9011) (Traffic Red RAL3020) (Orient Red RAL3031) (Traffic Orange RAL2009) (Traffic Green RAL6032) (Aqua RAL6027) or (1963 White Glass Woven Fibre Fabric), other finishes to order.

Environmental impact:

Core from 80% recycled local waste glass, product and packaging can be reused/recycled in NZ. Low VOC <0.002 Mg/M²/hr per ASTM D5116

Fire Reaction:

Material group number: 1S
C/VM2 / ISO 5660.1, Suitable for fire exit way and all other sprinklered & non sprinklered buildings.

Humidity:

Max 99% R/H at 45°C.

Light reflectance:

ASTM C1477 LR-1, >75% White

Maintenance:

Clean with vacuum, soft brush or damp cloth. Re-surfacing of panels available, consult Asona.

NZ Building Code:

Clause B2—durability, 5 years

Weight: (example)

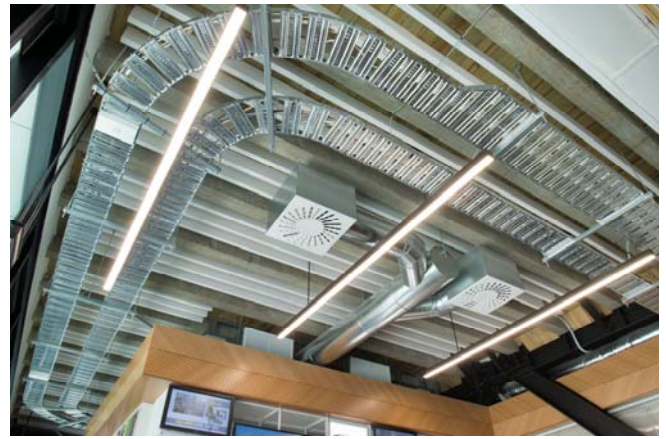
40 mm x 280mm @ 1.2 kg /lm
50 mm x 280mm @ 1.4 kg /lm
75 mm x 280mm @ 1.6 kg /lm

Installation:

Triton Baffle Beams™ are a finishing trade, installation shall not commence until the building is water tight, dry and free of dust and debris. Screw fix or suspend APC-3000 top channel. Then friction fix baffle beam to top channel with MS Polymer adhesive. Space baffles evenly or as required by acoustical consultant. To join panels saw cut ends and use contact adhesive to butt join. Cap open ends with Sonatex™

Specification:

Acoustic panels shall be Triton Baffle Beam™ as manufactured and supplied by Asona Ltd Tel: 09 525 6575 Fax: 09 525 6579, item # (), size shall be () x ()mm, thickness shall be (25) (40) (50) (75)mm, finish shall be Sonatex 2 ply acoustic laminate in Sonatex: (White AS180), (White AS600), (White AS700) (Mid Grey RAL7040) (Light Grey RAL7030) (Grey White RAL9002) (Wood Wool Print) (Plaster Print) (Wood Print over RAL1014 Oak) (Wood Print over RAL1013 Blond) (Wood Print over RAL8019 Walnut) (Zinc Yellow RAL1018) (Ivory RAL1014) (Graphite Black RAL9011) (Traffic Red RAL3020) (Orient Red RAL3031) (Traffic Orange RAL2009) (Traffic Green RAL6032) (Aqua RAL6027) or (1963 White Glass Woven Fibre Fabric). Panels shall be delivered to site with protective plastic film coating that is to be removed on installation. Suspend or direct fix panels to the structure using manufacturers approved fixings.



Asona Ltd

P.O Box 96-241 Balmoral,
Auckland, New Zealand
Sales: 09 525 6575
Email: info@asona.co.nz
Web: www.asona.co.nz

Factory:
Building 14, 7 Cain Road
Penrose
Auckland, New Zealand
Tel: (09) 525 6575
Fax: (09) 525 6579

ISO 9001:2008 Registered Firm No. NZ1014
© Copyright ASONA Ltd 2015

Asona, Triton Baffle Beam, Sonatex are trade marks of Asona Ltd. All dimensions are nominal. We reserve the right to change specifications.
Ref. BaffleBeam-1710